



Tools that boost productivity are essential to managing your chaotic workday. The new Sievers* M9 Total Organic Carbon (TOC) Analyzers offer you time-tested dependability with faster-than-ever analysis to help you reach the peak of productivity.



GE Power & Water
Water & Process Technologies
Analytical Instruments



Reach the peak of productivity with the M9

Sievers TOC analyzers have always been quick to set up, easy to use, and maintain. The M9 is fast, smart, versatile and instinctively simple. Designed to minimize operator intervention and data interpretation, the M9 allows you to reach the peak of productivity.



Fast, smart and versatile to optimize your sample processing time

- Twice-as-fast as GE's last generation TOC, now with two minute TOC analysis.
- Meets diverse application needs and regulatory requirements in pharmaceutical, microelectronics, power, manufacturing, and environmental industries.
- Improved dashboard-style, touch-screen interface simplifies operation and data review.
- At-a-glance consumables status.
- Streamlined, faster system protocols.
- Informative error and alert messages to simplify troubleshooting.
- Secure database structure improves data search and query capability.



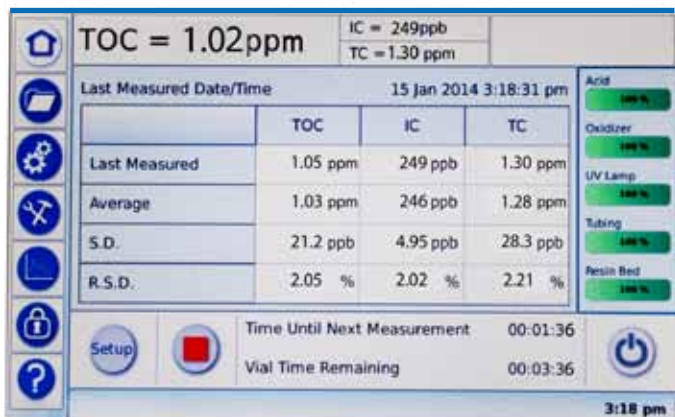
Instinctively simple to boost throughput

- Operations including calibration, verification, and validation are faster and automated.
- Autoreagent feature automatically selects optimal reagent flow rates.
- Sample methods can now be saved and applied to daily samples.

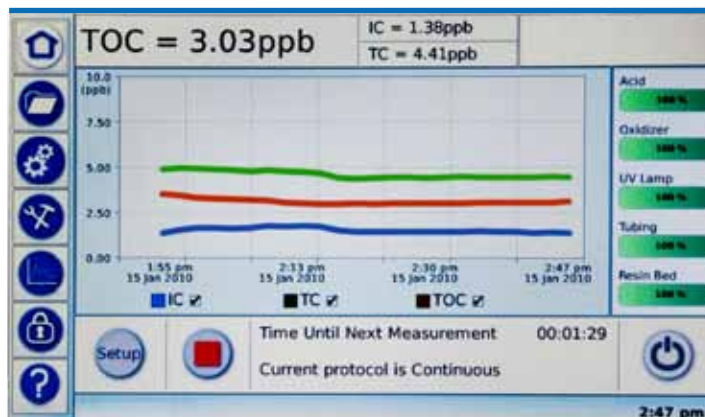


Quick to set up, easy to use and maintain

- Pre-calibrated at the factory - install and prepare for analysis in less than one hour.
- No special training required to set up, operate or maintain the instrument.
- Minimal maintenance—typically just a few hours per year.
- Modular design facilitates quick consumables replacement.
- On-Line and Portable models now with dust and spray resistant enclosures.
- Internal reagent packs—no external chemicals or gas supplies required.
- Easy data communications - export or collect data via USB, 4-20mA, or Modbus TCP/IP outputs.



M9 Laboratory Analyzer Interface



M9 On-Line Analyzer Interface

M9... the next generation of Sievers 900 TOC Analyzers



M9 Portable— genuine versatility:

- Lightweight, IP-21 rated, compact design can be hand-carried for TOC analysis anywhere.
- Measures discrete grab samples, automated analysis with the optional GE Autosampler, or On-Line.
- Designed for at-line cleaning validation applications.
- Optional Stage 1 conductivity measurements for grab or Autosampler mode.



M9 On-Line— uninterrupted analysis:

- Continuous monitoring with the ability to easily introduce discrete grab samples and standards.
- Wall-mounted with an IP-45-rated enclosure to withstand demanding process water environments.
- Broad, linear TOC range allows excellent low-level sensitivity for ultrapure water analysis and high-level capability for cleaning validation or other challenging water samples.
- Optional Turbo mode for microelectronics reclaim applications.



M9 Laboratory— superior productivity:

- Measure discrete grab samples via sample vials and sipper tubes or connect to the GE Autosampler to automate high-volume sample analysis.
- Well suited to analyze a variety of sample matrices and concentrations.
- Offers a small profile to efficiently use valuable bench space.
- Optional Stage 1 conductivity capability.

M9 TOC Analyzers meet the needs of these industries:



- **Pharmaceutical applications:** PW, WFI, Cleaning Validation



- **Microelectronics applications:** UPW Loop, UPW Make-up, Diagnostics, Reclaim

The M9 TOC Analyzers are engineered to meet stringent regulatory requirements:

- US Pharmacopeia (USP) <643> and <645>
- European Pharmacopeia (EP) 2.2.44 Total Organic Carbon
- Indian Pharmacopeia (IP) 2.4.30
- Chinese Pharmacopeia (CP) Appendix VIII R
- Japanese Pharmacopeia 16 (JP16) 2.59 monographs for Purified Water and Water for Injection

Dependability and flexibility: Sievers legacy



As the world's leading manufacturer of Total Organic Carbon (TOC) Analyzers, we continuously strive to exceed expectations by providing superior technology, design, quality and service. Our Analytical Instruments team has acquired more than 30 patents for technical innovations—including the Sievers Membrane Conductometric Method and the Integrated On-Line Sampling System (iOS).*

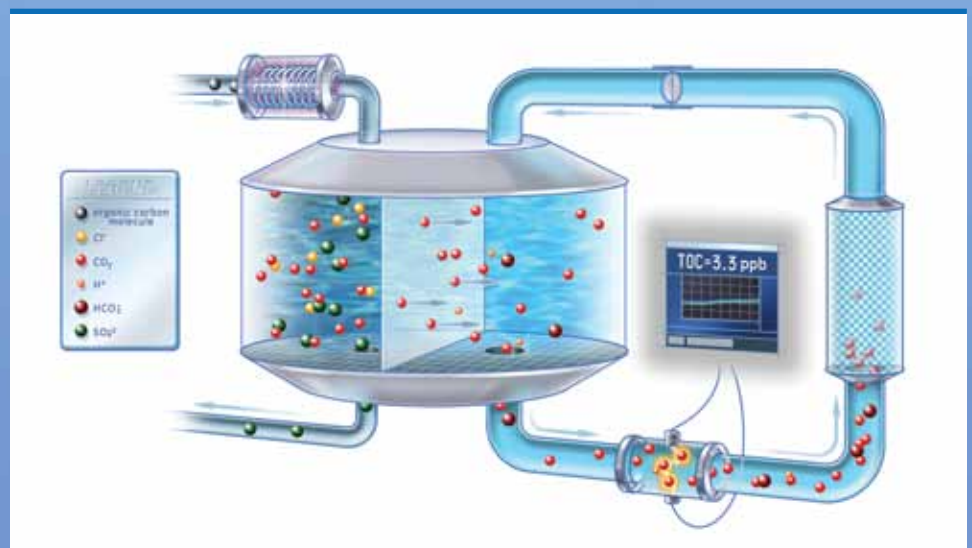
Our patented **Membrane Conductometric Detection Technology** delivers unmatched sensitivity, selectivity, stability, accuracy, and precision. Unlike other instruments that use non-dispersive infrared (NDIR) detection, Sievers TOC Analyzers are equipped with the Sievers Membrane Conductometric Detection method. Exhibiting a dynamic range of six orders of magnitude, our technology prevents significant drift over time, rendering extreme stability in our instruments. Less frequent calibration, combined with uncompromising analytical performance, makes our analyzer the workhorse you can depend on.* Visit our library (www.geinstruments.com) to see an animated demonstration of this technology.

Our proprietary **Integrated On-Line Sampling (iOS) System** enables easy introduction of external standards and samples. This unique feature allows you to directly introduce calibration, validation, and system suitability standards without removing the instrument from the continuous sample source or changing the sample inlet configuration. The iOS system also accommodates grab samples for spot checking TOC from other locations in a water system.

*iOS is only available with the M9 On-Line and Portable Analyzers.

* GE Analytical Instruments recommends conducting on-site calibration just once a year. By contrast, TOC Analyzers that use NDIR detection often require weekly or even daily calibration.

Gas-permeable membrane selectively passes only the CO₂ produced from oxidized organics, preventing acids, bases, and halogenated compounds from interfering with the measurement.





Sievers Certified Plus



Protect your TOC Analyzer investment with our Certified Plus genuine products and expert services. From on-site validation and start-up, preventative maintenance and warranties, to aftermarket consumables such as reagent packs, standards and vials, Certified Plus ensures you have a reliable and accurate TOC measurement solution.

TOC standards

Sievers Certified Plus reference materials represent a comprehensive offering of ready-to-use TOC standards for calibration, linearity, and USP system suitability. Our large-scale production capabilities provide substantial cost advantages over in-house preparation. Our expertise in preparing and storing standards allows us to guarantee the accuracy and extended shelf life of Sievers Standards, even at low concentrations.

Comprehensive technical support

Our team provides ongoing phone and electronic technical support, as well as on-site installation, maintenance, calibration, validation, and training services.



Optional accessories and configurations

- The high-capacity **GE Autosampler** enables 24+ hours of unattended sample analysis (63 or 120 sample-position capacity).
- **DataPro2* software** integrates the GE Autosampler with the M9 Analyzer, enabling time-saving features that maximize productivity and ensure easy TOC data management.
- **DataGuard* software** provides full compliance support for 21 CFR Part 11 and Annex 11 requirements for electronic records in pharmaceutical applications.
- **Sample Conductivity:** Measure and report sample conductivity in discrete grab samples.
- **Inorganic Carbon Remover (ICR):** Improves TOC accuracy for samples with high inorganic carbon (IC) levels.
- **Turbo mode:** Now available in on-line, grab, and autosampler modes. Provides industry leading four-second analysis time to quickly analyze samples or identify transient TOC excursions.

Optional accessories and configuration

	Laboratory	On-Line	Portable
GE Autosampler/DataPro2	X		X
DataGuard	X	X	X
Sample Conductivity	X		X
ICR	X	X	X
Turbo	X	X	X



Specification summary

	M9 and M9 ^e Laboratory Analyzer	M9 and M9 ^e On-Line Analyzer	M9 and M9 ^e Portable Analyzer
Operating Specifications			
Range	0.03 ppb to 50 ppm		
Precision	<1% RSD		
Accuracy	± 2% or ± 0.5 ppb, whichever is greater		
Sample Type	Autosampler or discrete grab sample	On-line continuous or discrete grab sample	On-line continuous, Autosampler, or discrete grab sample
Display Readout	3 significant digits		
Calibration	Typically stable for 12 months		
Analysis Time	2 minutes (4 seconds with the optional <i>Turbo</i> mode)		
Sample Temperature ¹	5-95°C (41-203°F)		
Ambient Temperature	5-40°C (41-104°F)		
Sample Pressure	n/a	100 psig	
On-Line Flow Rate	n/a	>50 mL/min (for on-line mode)	
Instrument Sample Flow Rate	0.5 mL/min		
Analyzer Specifications			
Outputs	USB device port (1), USB host ports (3);Ethernet	4-20 mA outputs (3); alarm outputs (4); binary input (1); USB device port (1), USB host ports (2);Ethernet	
Display	7" WVGA 800x480 pixel, Color LCD w/touch-screen		
Power	100 - 240 V~, 50 - 60 Hz, 100 VA		
Fuses	Replace with same type and size fuse: T 1.6 A 250 VAC Fuse (Slow Blow), size 5 x 20 mm appliance inlet		
Dimensions	H: 42.2 cm (16.6 in.); W: 24.6 cm (9.7 in); D: 40.0 cm (15.8 in)	H: 54.9 cm (21.6 in); W: 45.0 cm (17.7 in); D: 26.5 cm (10.4 in)	H: 39.5 cm (15.4); W: 22.9 cm (9.0 in); D: 46.4 cm (18.3 in)
Weight	9.4 kg (20.6 lb)	15.8 kg (34.9 lb)	9.4 kg (20.8 lb)
Enclosure Rating	n/a	IP-45	IP-21
Safety Certifications	ETL, CE		
Sample Conductivity (Optional)			
Raw Conductivity Range	0.01 to 2,000 µS /cm	n/a	0.01 to 2,000 µS /cm
Conductivity Accuracy	±0.005 µS/cm or ±1%, whichever is greater	n/a	±0.005 µS/cm or ±1%, whichever is greater
Conductivity Precision	<0.25% RSD	n/a	<0.25% RSD
Environment			
Maximum Relative Humidity	0 - 95%, non-condensing		
Maximum Altitude	3,000 m (9,800 ft)		
Pollution Degree	2		

The Americas

GE Analytical Instruments
6060 Spine Road
Boulder, CO 80301-3687 USA

T +1 800 255 6964
T +1 303 444 2009
F +1 303 527 1797

geai@ge.com

Europe/Middle East/Africa

GE Analytical Instruments
Unit 3, Mercury Way
Urmston, Manchester
UK M41 7LY

T +44 (0) 161 864 6800
F +44 (0) 161 864 6829

geai.europe@ge.com

Asia Pacific

GE Analytical Instruments
7/F, Building 5, No.2 Hua Tuo Rd,
ZhangJiang Hi-Tech Park, Pudong
Shanghai, China 201203

T +(8621) 38777735
F +(8621) 38777469

geai.asia@ge.com



¹ If the sample temperature is above 95°C (203°F), the optional PVDF iOS is required.

Call or visit our website to schedule a demonstration
and learn how M9 can take you to the peak of productivity!
www.geinstruments.com/M9

* Trademark of General Electric Company; may be registered in one or more countries.

This information herein may be subject to change without notice and is provided for general guidance only. The dimensions and performance of systems, products and services may vary. Pictures are for example purposes and not to scale. All legal obligations are exclusively as set out in contractual documents. Nothing contained herein constitutes a representation, warranty or undertaking.

