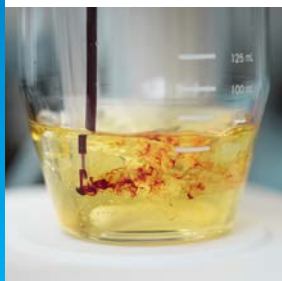


Efficient Water Determination Speed Meets Reliability



Fast Time-to-Result

The Fast Forecasting Amperometric control algorithm (FFA™) maintains a high reagent concentration to increase reaction rate, without sacrificing accuracy. This ensures fast and reliable results.



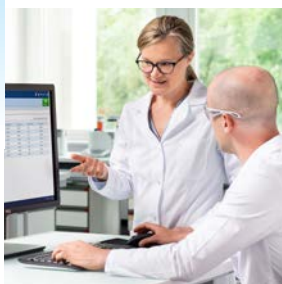
High Reliability

The titrator is designed for durability and precision, exemplified by its exceptional dispensing resolution of 120,000 steps. To maximize your titrator's ongoing accuracy and uptime, add a service maintenance package.



Efficient and Secure Operation

A user-friendly interface provides customizable shortcuts that simplify daily tasks. Automated solvent exchange minimizes the possibility of exposure to hazardous chemicals.



Digital Workflows

LabX™ software supports digital transformation and provides efficient and secure data management. Additionally, it supports compliance with 21 CFR Part 11 and other data integrity regulations.



EVA Karl Fischer Titrator Your Key to Productivity

EVA V1 and V3 titrators are ideal for efficiently determining the water content of simple liquids, soluble solids, and more challenging insoluble samples. Both models enhance your KF titration throughput by enabling:

- High reliability and efficiency via the FFA™ control algorithm, a fast-response digital sensor, and state-of-the-art dispensing technology.
- Convenient, secure workflows via features such as automatic sample detection and method start as well as automatic transfer of sample weights from the balance.
- Simplified handling of challenging samples with a range of accessories, including a small vessel and homogenizers.

Technical Specifications

General	Technique	Upol DC, amperometric			
	Polarization voltage range / resolution	-2300 mV to + 2300 mV / 0.1 mV			
	Current measuring range / resolution	-240 µA to + 240 µA / 0.00006 µA (displayed: 0.1 µA)			
Burette and dDrive	Dispensing resolution	120000 steps			
	Dispensing accuracy and precision	According to DIN/ISO 8655-3			
Power Consumption	Nominal input rating	100 – 240 V AC ± 10%, 50 – 60 Hz, 1.5 A			
	Standby / idle mode / during measurement*	0.4 W / 12 W / 16 W			
Application	Limit of Quantification (LOQ)*	0.2 mg water per sample (RSD = 1%)			
Dimensions	Width × depth [mm]	Titrator	Terminal	dDrive	dPump KF
		135 × 177 mm	194 × 129 mm	81 × 167 mm	51 × 169 mm

*These values were measured using a standard method under standard lab conditions.

Functionality Overview

		EVA V1	EVA V3
Application	Liquid and soluble solid samples	•	•
	Insoluble solid samples supported via: - homogenizer and blank methods - external sample extraction methods		•
Data Management	Secure data handling with LabX software		
	Network storage via Ethernet, USB stick (CSV, PDF)	•	•
	USB / Ethernet printer A4 / Letter; METTLER TOLEDO thermal and dot matrix printers		
User Management	Full control over access rights and permissions using optional active directory services in LabX software	•	•
Safety and Security	Automatic solvent exchange, automatic burette emptying		
	Direct transfer of sample weights from balance		
	Error-free data transfer ensured using SmartChemicals and a barcode reader	•	•
	Method start from outside a fume hood with optional 2.5 m terminal cable		

Order Information

	Description	Material #	EVA V1 30869280	EVA V3 30869282
Standard Delivery	Burette 5 mL	30869287	Included	Included
	Solvent pump dPump KF	30869285	Included	Included
	Titration kit KFV L (includes large vessel)	30869290	Included	Included
LabX Software	LabX Data Titration license	30851289	•	•
	LabX Centralized Titration license	30851291	•	•
	LabX Regulated Titration license	30851293	•	•
Alternative Burettes	Burette 2 mL	30869286	•	•
	Burette 10 mL	30869288	•	•
Alternative Vessels	Vessel KFV S (small vessel)	30869301	•	•
	Vessel KFV L-TS (thermostatable vessel)	30869302	•	•
Homogenizer	Kinematica (Polytron PT1300 D, PT-DA 12/2EC-E123)	(Third-party offering)		•
	IKA (T25 Easy Clean digital, S25N-18G)	(Third-party offering)		•

Comprehensive Service: Maintain the accuracy and efficiency of your EVA V1 or V3 titrator with services such as professional installation and qualification, preventive maintenance and calibration, on-site repair, and user training.